



## ***Installation Instructions***

### ***3" Basic Kit 2007 JEEP JK 4WD FTS24080***

#### **PARTS LIST**

	<b>FTS24080</b>	<b>Jeep JK 3" Basic Kit</b>
<b>Qu a</b>	<b>Part #</b>	<b>Description</b>
2	FT50164	Frnt Bump Stop Spacer
2	FT50261B K	Frnt. Ext Sway Bar Links
1	FT50280	Hardware Kit
2	FT50288B K	Frnt. Coil Spacer D&P
2	FT50289B K	Rear Coil Spacer D&P
1	FT50291B K	Frnt Trac Bar Bracket Inner
1	FT50292B K	Frnt Trac Bar Bracket Outer
2	FT50293B K	Rear Bump Stop Spacer
1	FT50294	Pitman Arm
1	FT50296B K	Rear Trac Bar Bracket
1	FT50375	Hdwr Sub-Assembly Kit

	<b>FT50375</b>	<b>Hdwr Sub-Assembly Kit</b>
<b>Qu a</b>	<b>Part #</b>	<b>Description</b>
1	FT157	Rear Trac Bar Brkt. Sleeve
2	FT24080i	Instruction Sheet
1	FT50048	Sway Bushing Kit (4 Pack)
1	FT50089	Sway Bar Sleeve Kit (4 Pack)
2	FT50290	Nut Tab Rear Coil Spacer
2	FT50295	Rear Brake Line Drop
1	FT50297	Frnt. Alignment Cam Kit
1	FT50298	E-Brake Bracket
1	FT50300	Front Drive Shaft Boot Clamp

**TOOL LIST: (NOT INCLUDED)**

- FLOOR JACK & JACK STANDS
- ASSORTED METRIC AND S.A.E SOCKETS, & WRENCHES
- TORQUE WRENCH
- PITMAN ARM PULLER
- BALL JOINT SPLIT FORK
- DIE GRINDER W/ SANDING DRUM

# ***3" Basic Kit***

**2007 JEEP JK 4WD****FTS24080****HARDWARE LIST**

Qua	Description	Location	Qua	Description	Location
2	1/2"-13 x 2 1/2" Bolt	Lower Front Shock Bolt	2	1/2"-13 x 2 1/2" Bolt	Lower Rear Shock Bolt
2	1/2"-13 C-Lock Nut		2	1/2"-13 C-Lock Nut	
4	1/2" SAE Flat Washer		4	1/2" SAE Flat Washer	
4	1/2" USS Flat Washer		2	1/2" USS Flat Washer	
2	7/16"-14 x 1 1/4" Bolt	Upper Frt Coil Spacer	4	5/16"-18 x 1" Bolt	Rr Bumpstop Bracket
2	7/16"-14 C-Lock Nut		4	5/16"-18 C-Lock Nut	
4	7/16" SAE Flat Washer		8	5/16" SAE Flat Washer	
2	1/2"-13 x 4" Bolt	Frnt Bumpstop Spacer	2	1/4"-20 x 3/4" Bolt	Rr Brake Line Bracket
2	1/2"-13 C-Lock Nut		2	1/4"-20 C-Lock Nut	
4	1/2" SAE Flat Washer		4	1/4" SAE Flat Washer	
2	1/2"-13 x 2 3/4" Bolt	Frnt Sway Bar End link	2	1/2"-13 x2 1/2" Bolt	Rr Coil Spring Spacer
2	1/2"-13 C-Lock Nut		2	1/2" SAE Flat Washers	use with FT50290 nut tab
4	1/2" SAE Flat Washer		1	9/16"-12 x 3" Bolt	Rear Trac Bar Bracket
1	9/16"-12 x 3" Bolt	Front Trac Bar Bracket	1	9/16"-12 C-Lock Nut	
1	9/16"-12 C-Lock Nut		2	9/16" SAE Flat Washer	
2	9/16" SAE Flat Washer		2	3/8"-16 x 1" Bolt	
2	5/16"-18 x 1" Bolt		2	3/8"-16 C-Lock Nut	
2	5/16"-15 C-Lock Nut		4	3/8" SAE Flat Washer	
6	5/16" SAE Flat Washer		1	Thread Locking Compound	

**DO NOT ALTER THE FINISH OF THESE COMPONENTS, EXAMPLE- CHROMING, ZINC PLATING OR PAINTING. CHANGING THE FINISH CAN CAUSE STRUCTURAL FATIGUE OF COMPONENTS.**

**CHECK ALL PARTS INCLUDED IN THIS KIT TO THE PARTS LIST ABOVE BEFORE BEGINNING INSTALLATION OF THE KIT. IF ANY PIECES ARE MISSING, CONTACT FABTECH AT 909-597-7800**

**VEHICLES THAT WILL RECEIVE OVERSIZED TIRES SHOULD CHECK BALL JOINTS, TIE RODS ENDS AND IDLER ARM EVERY 2500-5000 MILES FOR WEAR AND REPLACE AS NEEDED**

**READ ALL INSTRUCTIONS THOROUGHLY FROM START TO FINISH BEFORE BEGINNING INSTALLATION! IF THESE INSTRUCTIONS ARE NOT PROPERLY FOLLOWED, SEVERE FRAME, DRIVELINE AND / OR SUSPENSION DAMAGE MAY RESULT.**

**NOTE- PRIOR TO THE INSTALLATION OF THIS SUSPENSION SYSTEM A FRONT END ALIGNMENT MUST BE PERFORMED AND RECORDED. DO NOT INSTALL THIS SYSTEM IF THE VEHICLE ALIGNMENT IS NOT WITHIN FACTORY SPECIFICATIONS. CHECK FOR FRAME AND SUSPENSION DAMAGE PRIOR TO INSTALLATION. THIS SUSPENSION SYSTEM DOES NOT REQUIRE WELDING FOR INSTALLATION. DO NOT WELD ANY OF THESE COMPONENTS.**

**THE INSTALLATION OF THIS SUSPENSION SYSTEM SHOULD BE PERFORMED BY A PROFESSIONAL MECHANICS.**

**YOU MUST USE FABTECH SHOCK WITH THIS KIT, FTS7236 PERFORMANCE FRONT & FTS6001 PERFORMANCE REAR OR FTS81058 DIRT LOGIC FRONT & FTS81059 DIRT LOGIC REAR.**

**FRONT SUSPENSION INSTRUCTIONS:**

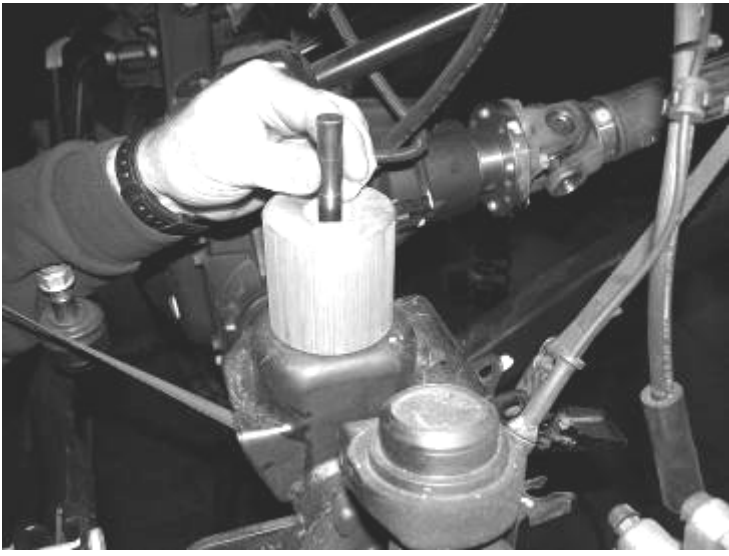
1. Disconnect the negative terminal on the battery. With the vehicle on level ground, set the emergency brake and block the rear tires. Jack up the front end of the truck and support the frame rails with jack stands. **NEVER WORK UNDER AN UNSUPPORTED VEHICLE!** Remove the front tires. Support the front axle, do not allow to hang freely.
2. Working from the driver side of the truck, unbolt the front brake line bracket from the frame and save the hardware. Remove the ABS sensor wire from the C-Clips on the front knuckle. Remove and discard the sway bar endlinks, save the hardware. Unplug the front diff locker harness from the axle (RUBICON MODELS ONLY)
3. Remove the front shock, save lower mount hardware, and discard upper. Remove the factory coil spring, and save, you will need to allow the front axle to hang freely to remove the coil spring. Remove the factory upper coil isolator, and save. SEE PHOTO BELOW.



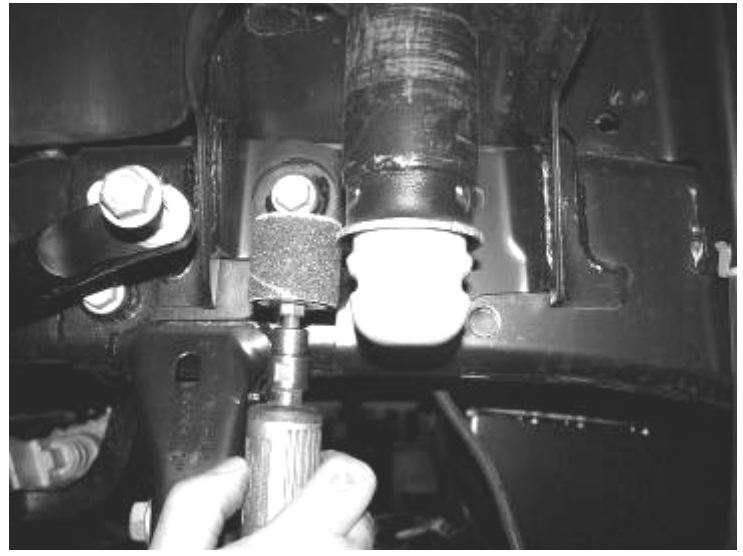
4. Repeat steps two and three on the passenger side of the Jeep.
5. Remove and save the trac bar and hardware. Use a split fork and separate the draglink from the pitman arm, save hardware. Use a pitman arm puller and remove the stock pitman arm. Discard the arm and save the nut and washer. Locate the FT50294 pitman arm and install in the same position as the stock one was with the factory hardware. Torque to 185 LBS. SEE PHOTOS IN NEXT COLUMN.



6. Locate FT50164 Front Bumpstop Spacer position it on the center of the coil spring mount and mark with a center punch. Use a drill with a 1/2" bit and drill the new hole to mount the new Fabtech spacer. **(DO NOT INSTALL AT THIS TIME) SEE PHOTOS BELOW AND ON NEXT PAGE.**

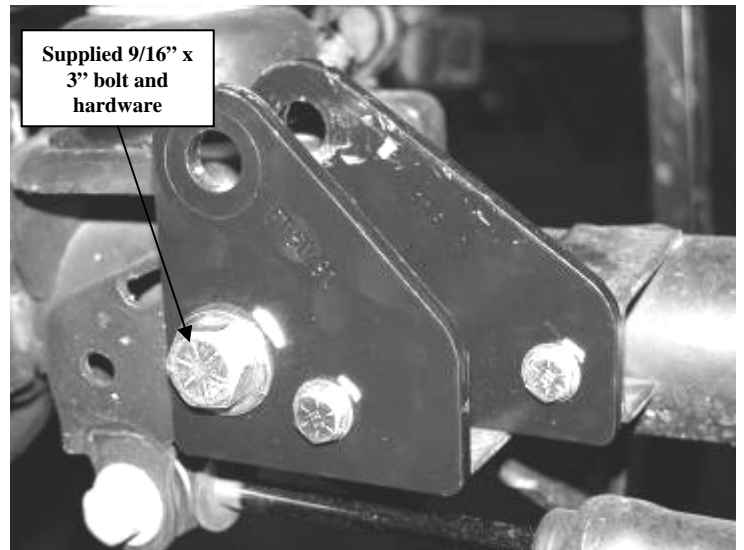
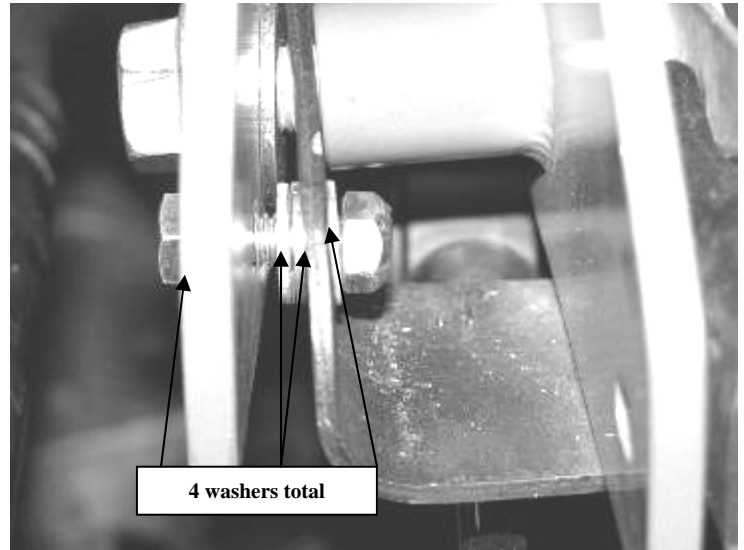
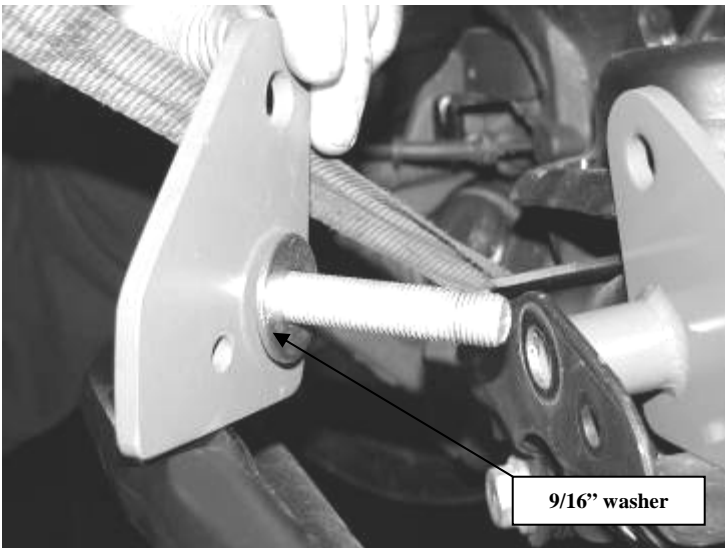
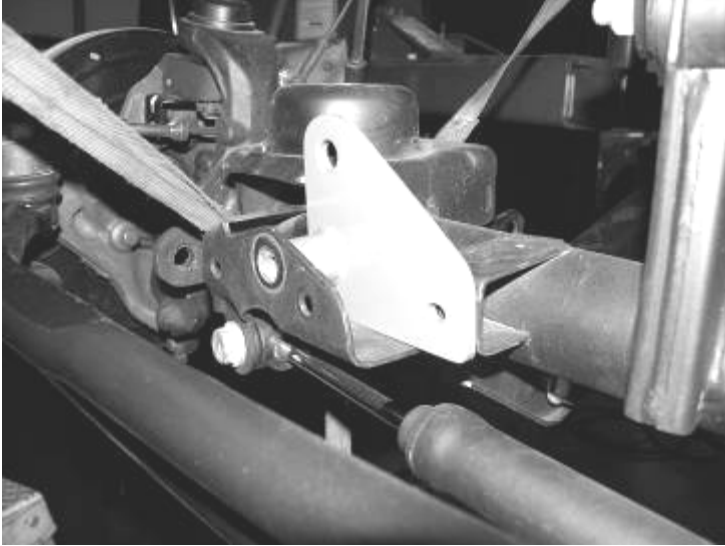


7. Locate FT50288BK Front Coil Spacer, stock coil spring isolator, and supplied 7/16" x 1 1/4" bolt and hardware. Use a die grinder with a sanding drum and sand down the edge of the factory upper bumpstop. **(ONLY SAND ENOUGH TO SLIDE THE COILSPACER AROUND THE UPPER MOUNT)**. Install the isolator onto the spacer and slide the spacer over the bumpstop and up into the coil bucket. Insert the 7/16" bolt through the spacer and up through the top of the coil bucket. Torque to 55 lbs. SEE PHOTOS BELOW AND IN NEXT COLUMN.

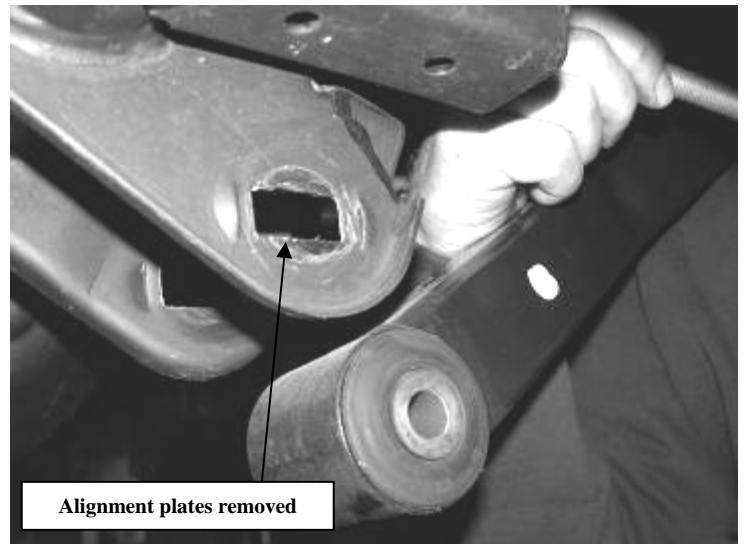


8. Locate FT50291 Front Inner Trac Bar Bracket, FT50292 Front Outer Trac Bar Bracket, supplied 9/16" x 3" bolt and hardware, and the supplied 5/16 x 1" hardware. Position the inner bracket into the trac bar mount. Place the 9/16" bolt into the outer bracket and a flat washer on the back side of the bracket. Attach the outer bracket to the factory trac bar mount and leave loose. Take a 5/16" x 1" bolt with a flat

washer and insert it into the outer bracket only. Place **two (2)** additional flat washers onto the bolt between the outer bracket and the factory trac bar bracket followed by another washer and nut on the inside of the factory mount. Leave loose. Attach the inner trac bar bracket to the factory mount with the 5/16" hardware. Torque the 5/16" hardware to 20 lbs and the 9/16" bolt to 95 lbs. SEE PHOTOS ON NEXT PAGE.

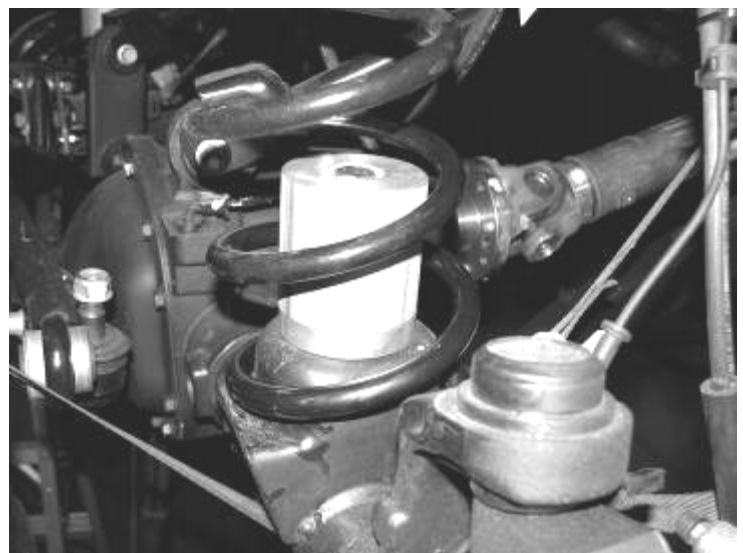
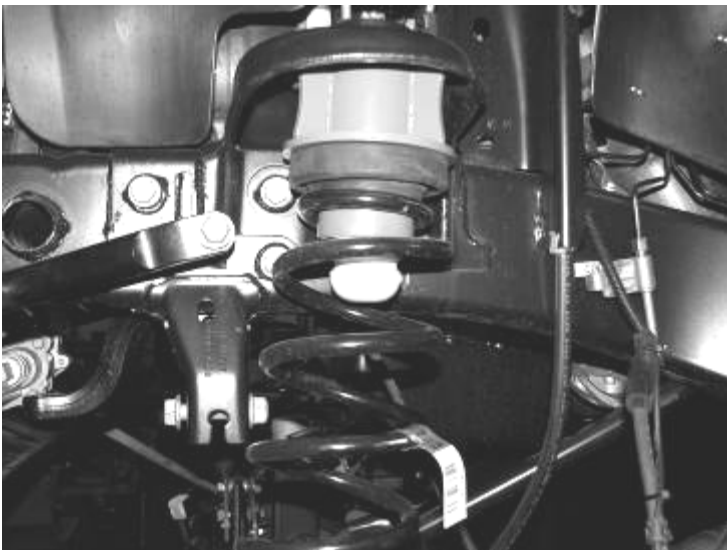
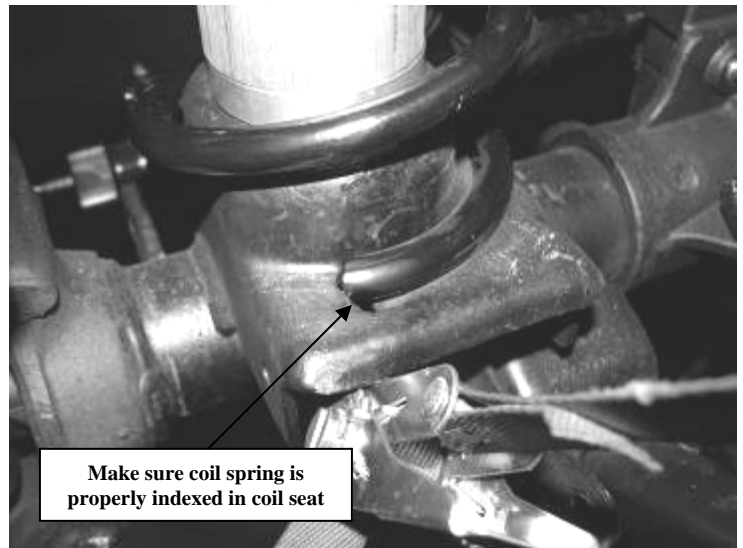
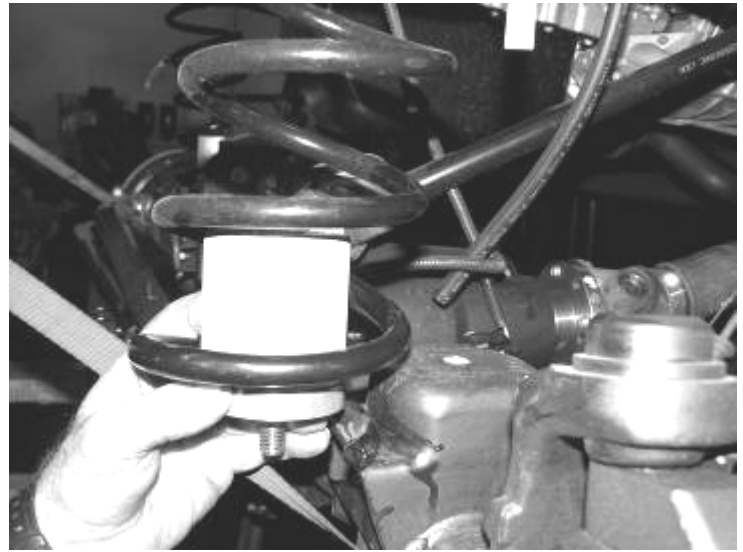


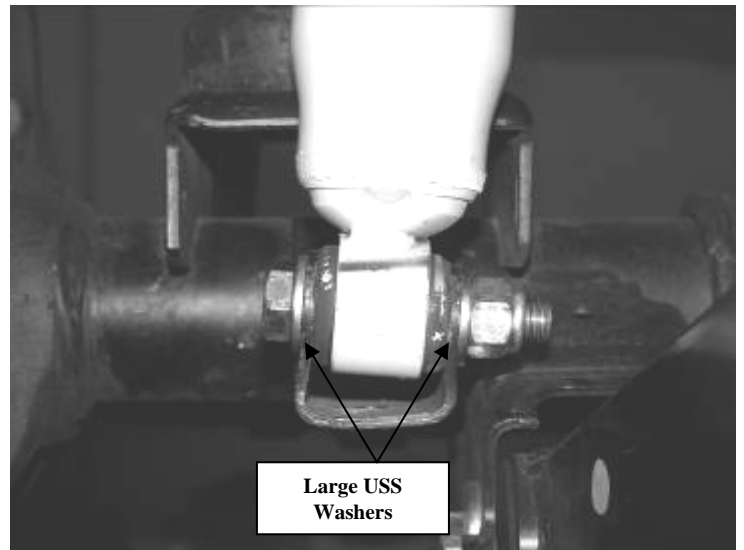
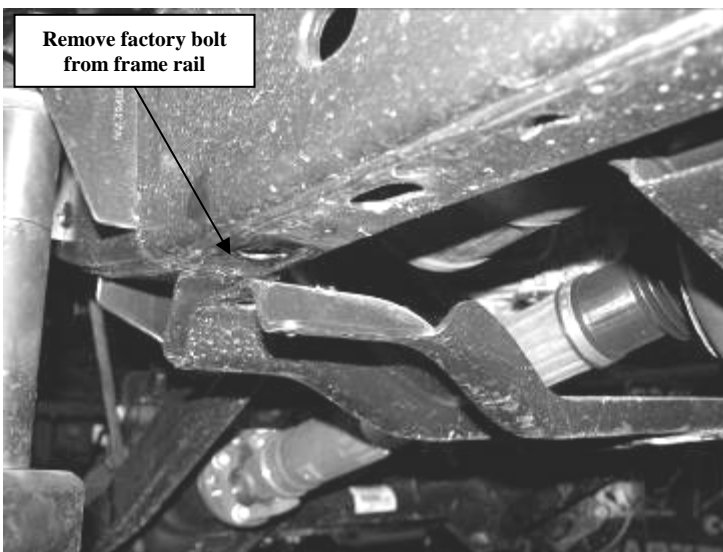
9. Remove the front lower link arm from the differential and discard the factory hardware. Using a small flat chisel and hammer, remove the alignment plates from the factory mount. Locate the supplied alignment cams and attach the link arms back into the factory mounts. Rotate the cams so that the large part of the lobe is to the front of the axle. Torque to 95 lbs. SEE PHOTOS BELOW.





10. Locate the front bumpstop spacer and hardware and place into the bottom of the factory front coils. Reinstall the factory coil spring up onto the new coil spacer and then onto the spring perch on the axle. Rotate the coil spring so that the end of the coil is seated in the perch. Attach the bumpstop spacer onto the previously drilled axle mounts. **Note: If your Jeep has the optional skid plate below the front driveshaft, remove the bolts from each side of the frame and ONLY loosen the center bolt. Lowering the skid plate will allow the front differential and driveshaft to be lowered enough to install the driver side coil spring. Re-attach skid plate and torque hardware to 70lbs once the coil springs are installed. SEE PHOTOS BELOW, IN NEXT COLUMN, AND ON NEXT PAGE.**



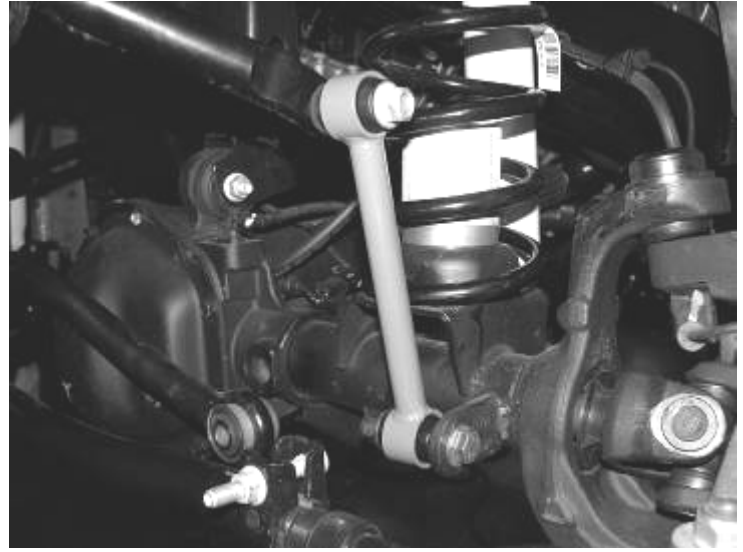


11. Locate the Fabtech shock FTS7236. (Not included in the kit), factory front shocks, the supplied ½" x 2 ½" bolts, USS and Flat Washers, and C-Lock Nuts. Remove the upper bushings and washers from the factory shocks and use to install the new shock to the upper mounting location on the coil bucket. Attach the bottom of the shock to the stock lower shock mount. Use two flat washers on the outside of the mount and two large USS washers on each side of the shock busing on the inside of the mount. SEE PHOTOS BELOW AND IN NEXT COLUMN.

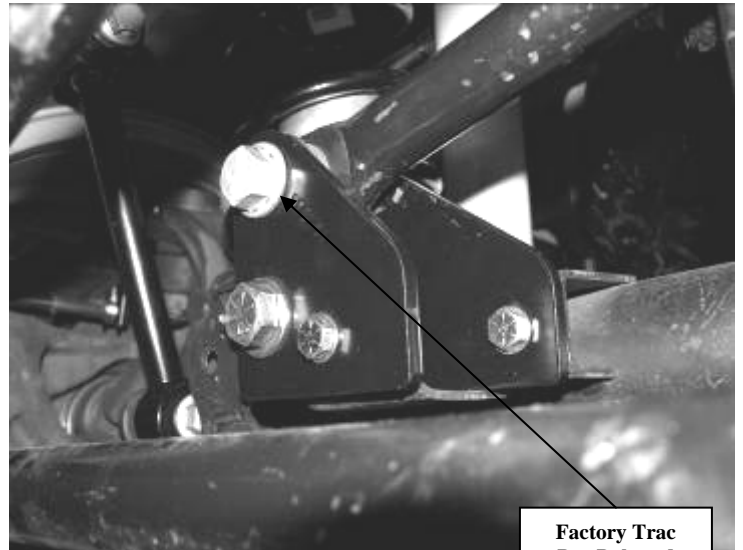
12. Re-install the ABS lines, differential vent tube, and electrical connection for front locker (**Rubicon Models Only**). Re-attach the brake line bracket to the frame with the factory hardware.
13. Reconnect the inner tie rod end using factory hardware to the new dropped pitman arm. Torque to 45 ft lbs. SEE PHOTOS BELOW AND ON NEXT PAGE.



14. Locate FT50261 Front Sway Bar Endlinks, FT50048 & FT5009 bushing and sleeve kits. Press one bushing and one sleeve from the supplied bushing kit into each end of the end link. With the factory hardware, connect the new end link to the sway bar, then using the supplied 1/2" x 2 3/4" bolt, nut, and washers connect to the lower sway bar mount. Torque the upper hardware to 40 lbs and the lower hardware to 75 lbs. SEE PHOTO BELOW.

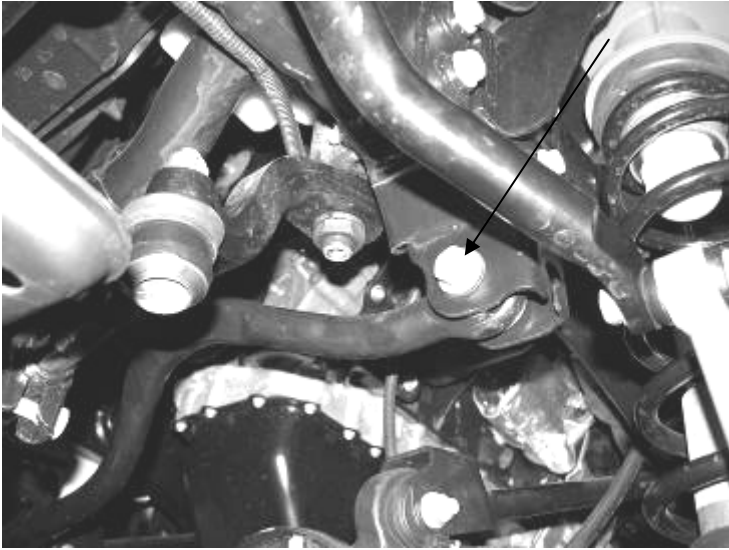


15. Install front tires and wheels. Torque lug nuts to wheel manufacturer's specifications. Turn wheels left to right to check for proper clearance of brake lines, ABS lines, and fenders.
16. Locate the factory trac bar and upper hardware and the lower factory trac bar bolt and nut tab. Position the trac bar into the new mount on the axle and attach with the factory bolt and nut tab. Then attach the trac bar to the factory upper mount with the factory hardware. Torque the factory hardware to 100 lbs. SEE PHOTOS IN NEXT COLUMN.

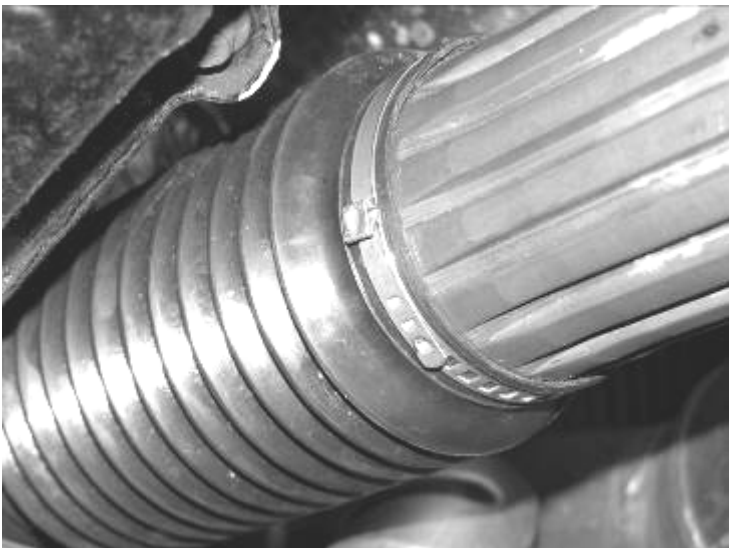
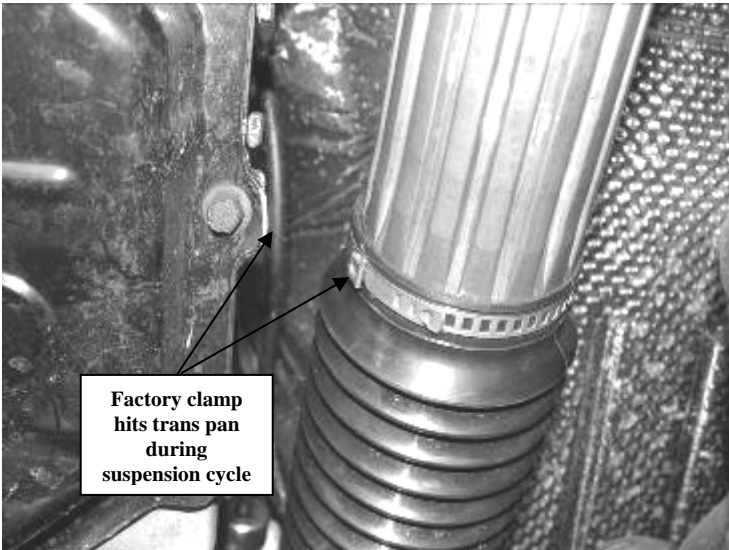


**Factory Trac  
Bar Bolt and  
hardware**



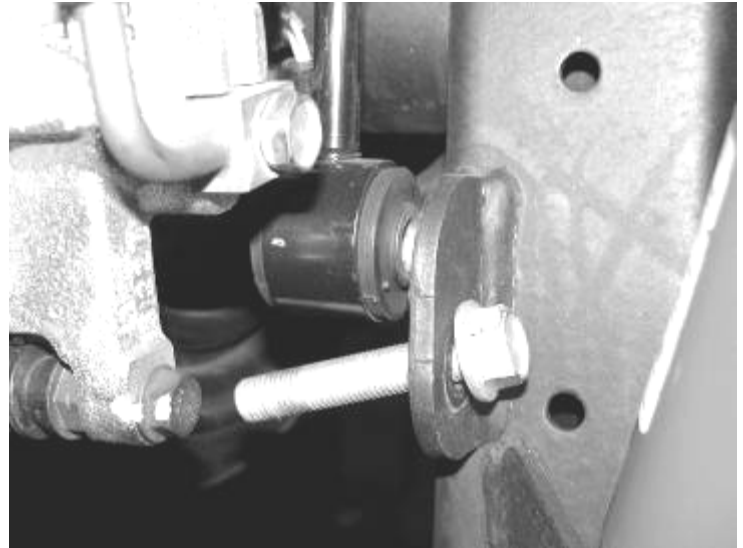


17. Locate the factory front driveshaft boot clamp and remove with out damaging the boot. Locate and install the supplied boot clamp in the factory position. Once the new clamp is installed, use a small hammer and lightly flatten out the crimp section of the clamp. This is done for clearance of the clamp to the transmission during full suspension travel. SEE PHOTOS BELOW AND ON NEXT PAGE.

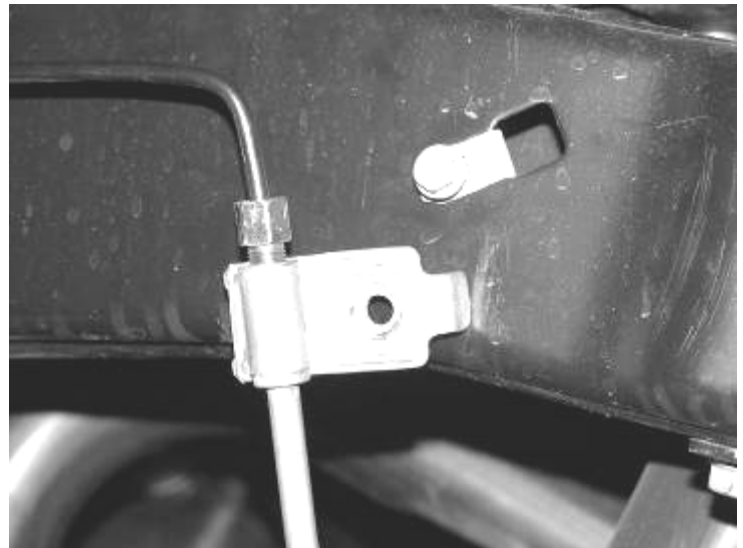


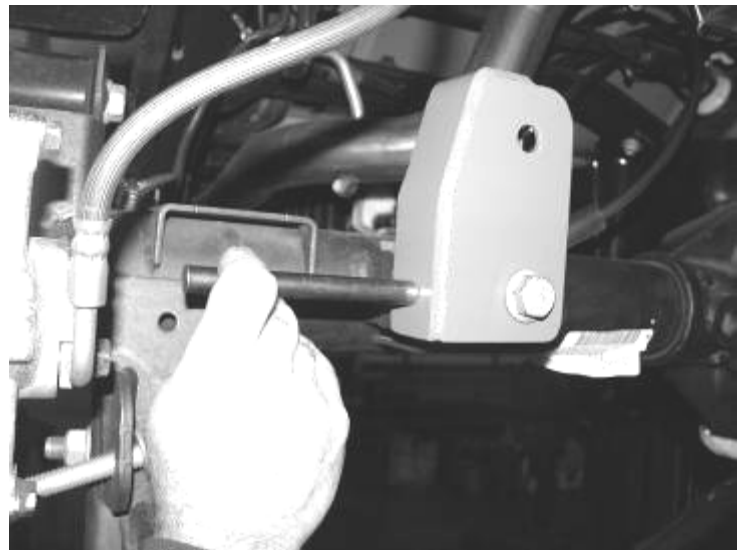
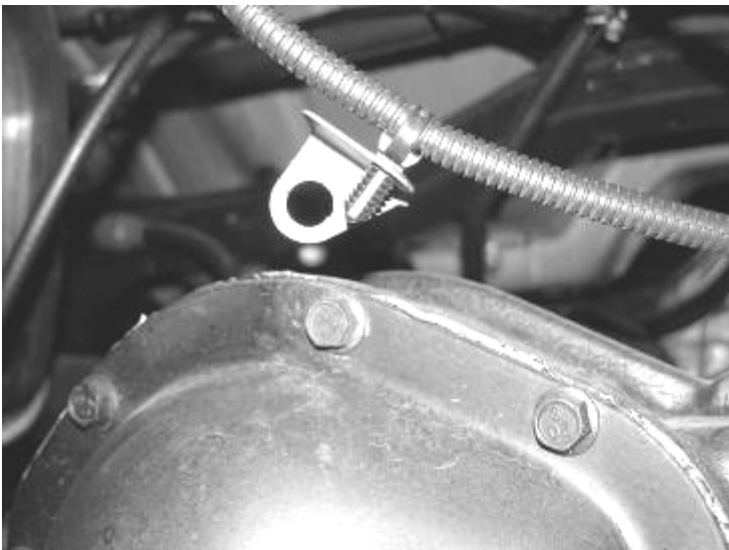
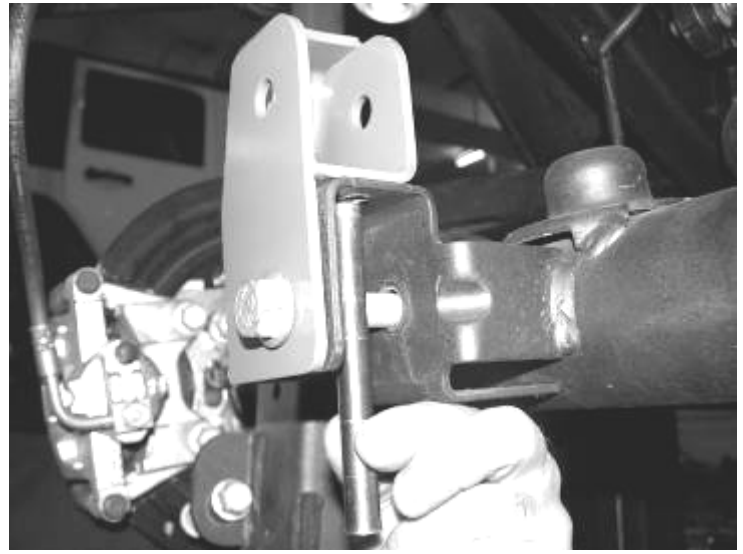
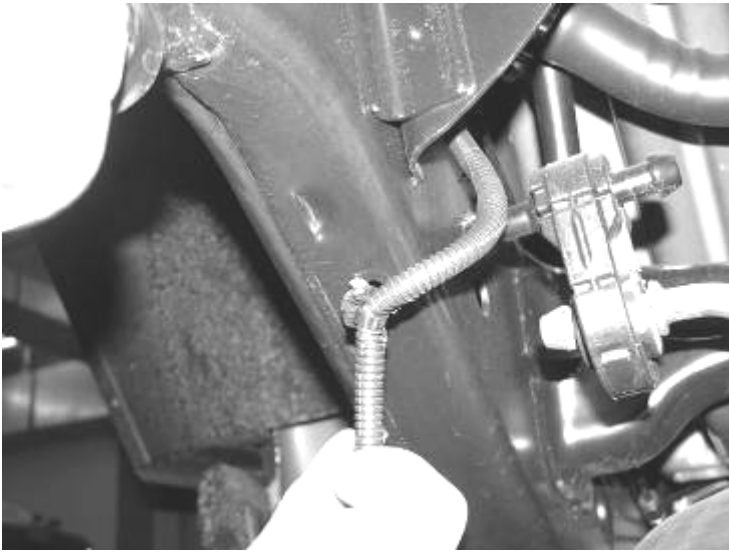
**REAR SUSPENSION INSTRUCTIONS:**

18. Jack up the rear end of the vehicle and support the frame rails just in front of the rear bumper with jack stands. **NEVER WORK UNDER AN UNSUPPORTED VEHICLE!** Remove the rear tires. Support the rear axle, do not allow to hang freely.
19. Remove the factory shocks and discard, save upper mount hardware. Disconnect the rear sway bar end links at the lower mount on the axle, save hardware. SEE PHOTO BELOW.



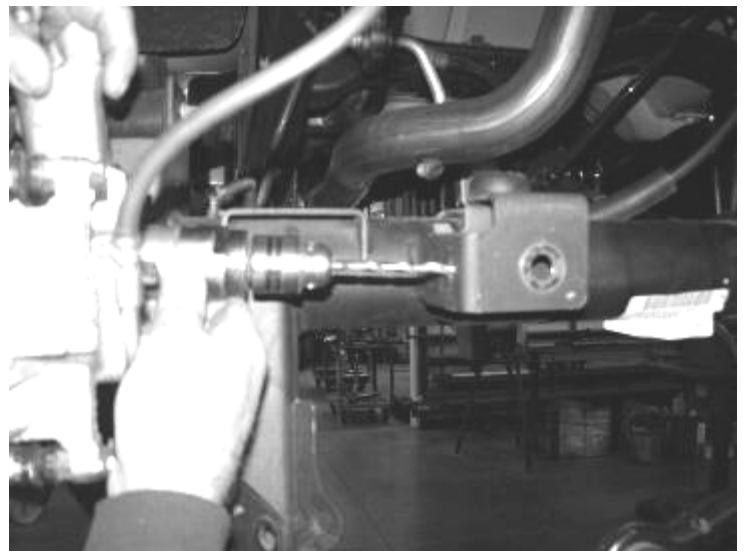
20. Remove the brake line bracket from the frame and save the hardware. Remove the plastic clip that holds the ABS lines to the frame and at the rear upper link arm pockets. Do not damage the clips, they will be reused. Remove the top differential cover bolt and remove the ABS line clamp. Save the bolt. Remove the two nuts holding the E-Brake cable to the body of the Jeep and save. SEE PHOTOS IN NEXT COLUMN.

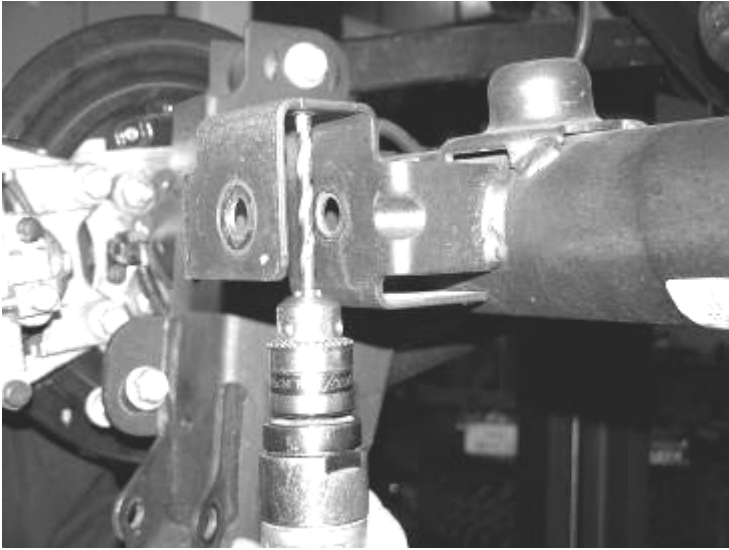




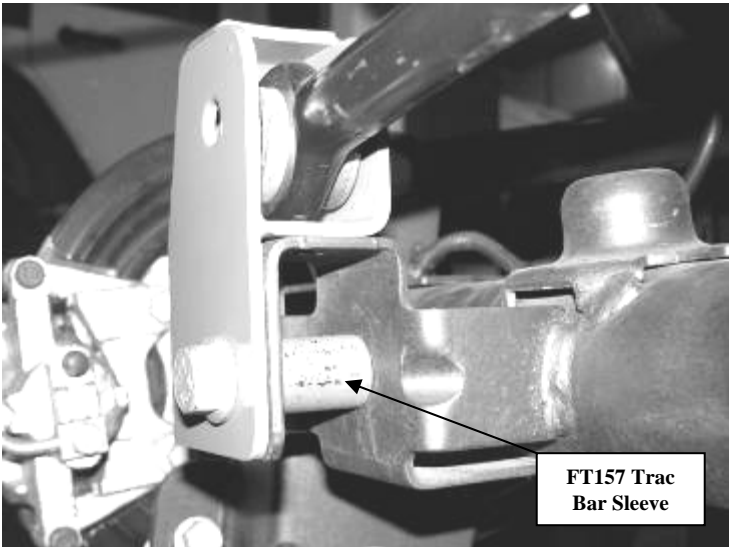
21. Remove the factory coil springs, and save, you will need to allow the axle to hang freely to remove the coil spring. Remove the factory upper coil isolator and save.

22. Remove the lower trac bar from the trac bar mount on the axle and save the hardware. Locate FT50296 Rear Trac Bar Bracket and position it onto the factory trac bar mount and insert the factory hardware to hold the new bracket in place. Use a center punch and mark the two new 3/8" holes from the bracket onto the mount. Remove the bracket from the mount and use a drill with a 3/8" bit to drill the two new holes. SEE PHOTOS BELOW AND IN NEXT COLUMN.

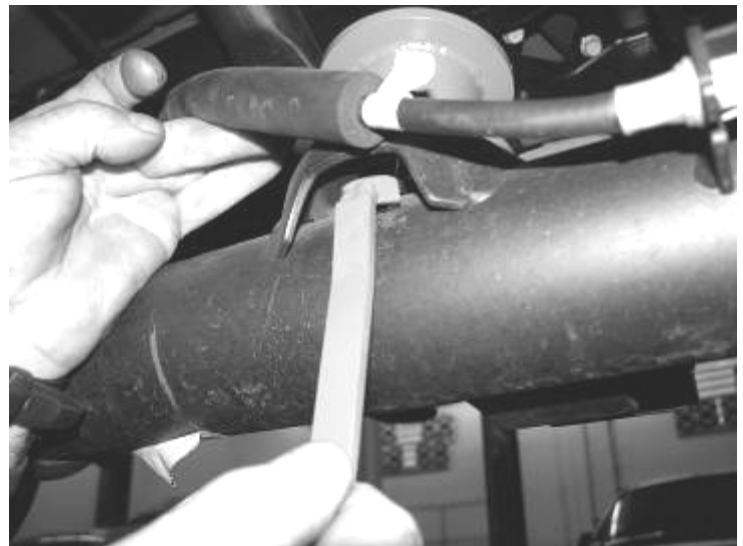
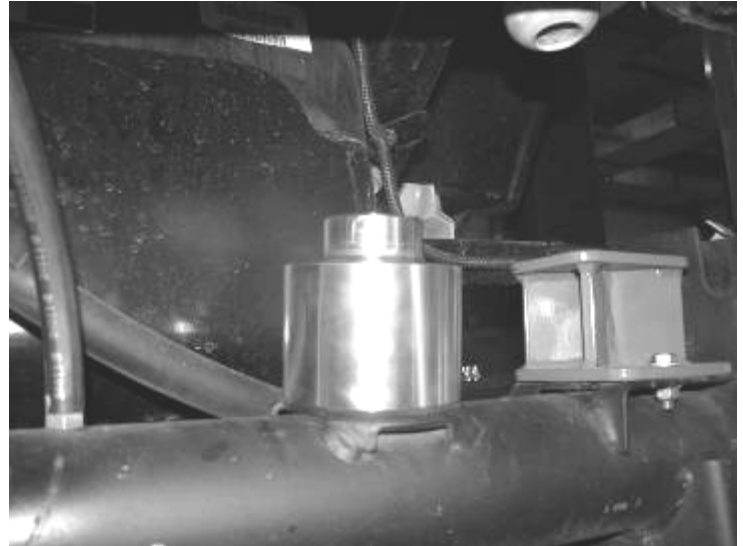




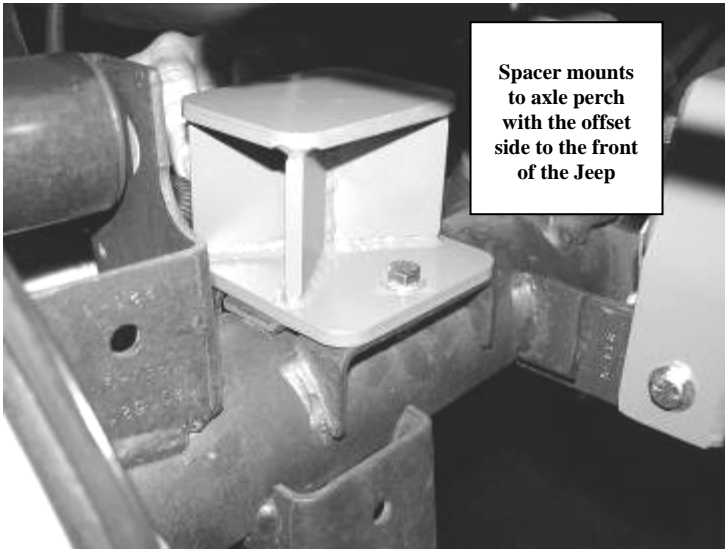
23. Position the trac bar into the new trac bar bracket. Attach the new bracket to the factory mount with the factory hardware and the provided FT157 Sleeve in the factory trac bar mount. Using the provided 3/8" hardware, attach the new bracket to the factory mount and torque to 30 lbs. Torque the factory trac bar bolt to 100 lbs. Attach trac bar to the new mount using the provided 9/16" x 3" hardware. Torque the 9/16" bolt to 95 lbs. SEE PHOTOS ON NEXT PAGE.



24. Locate FT50289 Rear Coil Spring Spacer and FT50290 Nut Tab. Position the coil spacer onto the factory spring mount using the nut tab and the supplied 1/2" x 2 1/2" bolts with washers and thread-locking compound. Torque to 75 lbs. SEE PHOTOS BELOW AND IN NEXT COLUMN.



25. Locate FT50293 Rear Bumpstop Spacer. Position the spacer onto the factory bumpstop pad on the axle and attach with the supplied 5/16" x 1" bolts and hardware (**mount the spacer to the axle with the offset of the spacer to the front of the Jeep**) SEE PHOTO BELOW.



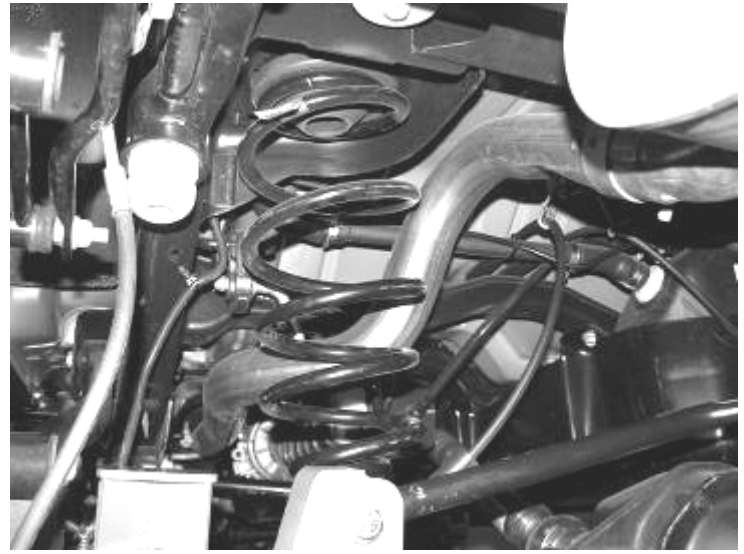
Spacer mounts to axle perch with the offset side to the front of the Jeep

Photo of driver rear looking from back to front

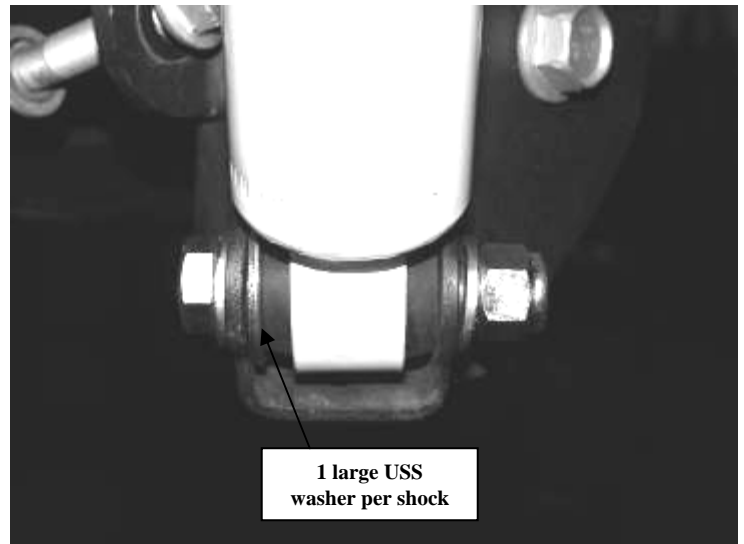
26. Locate FT50298 E-Brake Bracket and supplied 1/4" hardware. Position the bracket to the factory mounting position and attach with the factory hardware. Attach the factory bracket to the new Fabtech bracket with the 1/4" hardware. Torque to 10 lbs. SEE PHOTO ON NEXT PAGE.



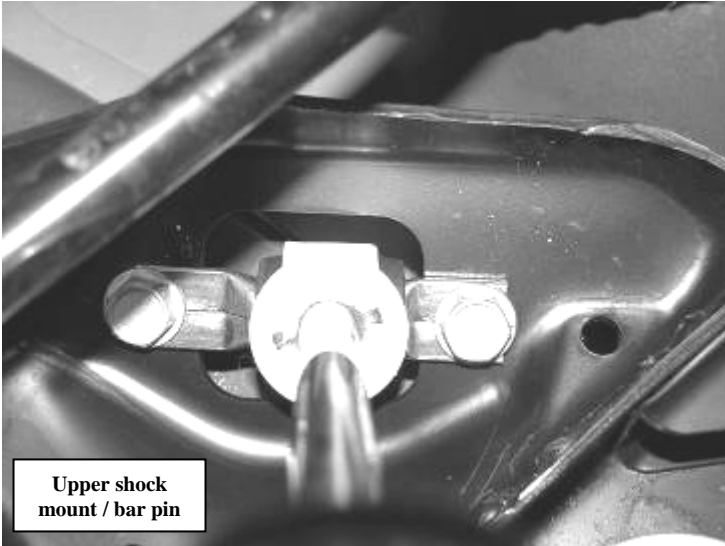
27. Reinstall the factory coil spring with the factory isolators on the top into the upper mount first. Then onto the new coil spacer on the axle. (**make sure upper isolator is fully seated into the upper pocket / mount**). SEE PHOTOS BELOW.



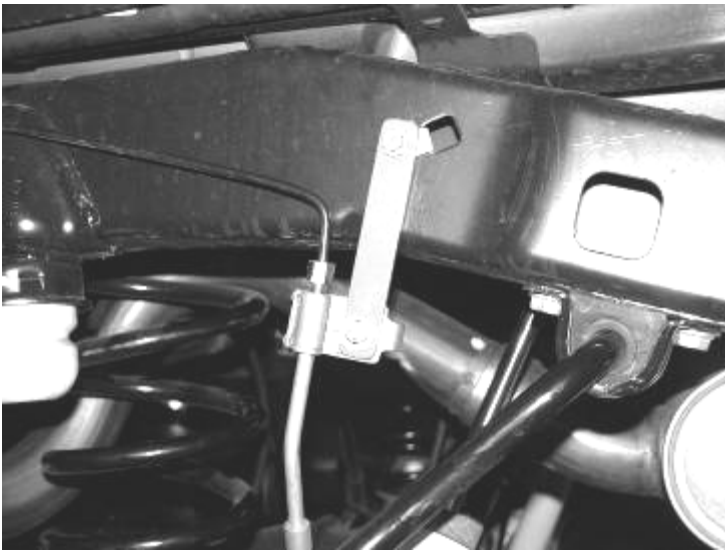
28. Install the Fabtech shock FTS6001 (Not included in the kit) Use the factory upper hardware to mount the bar bin and the supplied 1/2" x 2 1/2" bolt, large USS washers, and hardware. (insert one large USS washer per side inside the shock mount with the shock) Torque the upper hardware to 60 lbs and the lower to 75lbs. SEE PHOTOS BELOW.



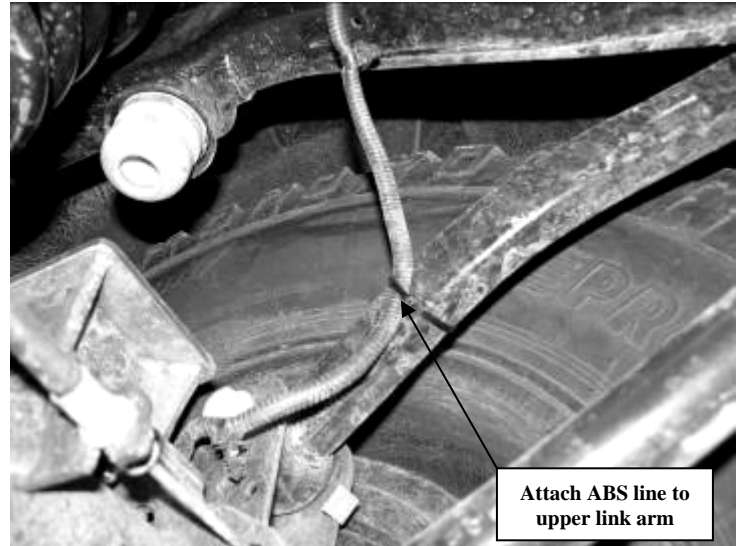
1 large USS washer per shock



29. Locate FT50295 Rear Brake Line Drop Bracket, supplied 1/4" hardware, and factory rear brake line hardware. Attach the drop bracket to the factory mount with the factory hardware. Attach the factory brake line bracket to the new drop bracket with the 1/4" hardware. Torque to 10 lbs. SEE PHOTO ON NEXT PAGE.



routing and attach the line to the upper link arm with the supplied 8" zip ties (**DO NOT reinsert the plastic clips into the frame**). SEE PHOTO IN NEXT COLUMN.



31. Install rear tires and wheels. Torque lug nuts to wheel manufacture's specifications.
32. Recheck all nuts and bolts for proper torque specifications before driving. Realign truck to factory specifications and drive truck. Re-adjust headlights.

## **RETORQUE ALL NUTS, BOLTS AND LUGS AFTER 50 MILES AND PERIODICALLY THEREAFTER.**

For technical assistance call: 909-597-7800

### **Product Warranty and Warnings-**

Fabtech provides a Limited Lifetime Warranty to the original retail purchaser who owns the vehicle, on which the product was originally installed, for defects in workmanship and materials.

The Limited Lifetime Warranty excludes the following Fabtech items; bushings, bump stops, ball joints, tie rod ends, limiting straps, cross shafts, heim joints. These parts are subject to wear and are not considered defective when worn. They are warranted for 60 days from the date of purchase for defects in workmanship.

Coil over take apart shocks are considered a serviceable shock with a one year warranty on leakage only. Service seal kits are available separately for future maintenance. All other shocks are covered under our Limited Lifetime Warranty.

Fabtech does not warrant any product for finish, alterations, modifications and/or installation contrary to Fabtech's instructions. Alterations to the finish of the parts including but not limited to painting, powdercoating, plating and/or welding will void all warranties. Some finish damage may occur to parts during shipping which is considered normal and is not covered under warranty.

Fabtech products are not designed nor intended to be installed on vehicles used in race applications or for racing purposes or for similar activities. (A "RACE" is defined as any contest between two or more vehicles, or any contest of one or more vehicle against the clock, whether or not such contest is for a prize). This warranty does not include coverage for police or taxi vehicles, race vehicles, or vehicles used for government or commercial purposes. Also excluded from this warranty are sales outside of the United States of America.

Installation of most suspension products will raise the center of gravity of the vehicle and will cause the vehicle to handle differently than stock. It may increase the vehicle's susceptibility to a rollover, on road and off road, at all speeds. Extreme care should be taken to operate the vehicle safely at all times to prevent rollover or loss of control resulting in serious injury or death. Fabtech front end Desert Guards may impair the deployment or operation of vehicles equipped with supplemental restraining systems/air bag systems and should not be installed if the vehicle is equipped as so.

Fabtech makes every effort to ensure suspension product compatibility with all vehicles listed in the catalog, but due to unknown auto manufacturers production changes and/or inconsistencies by the auto manufacturer, Fabtech cannot be responsible for 100% compatibility, including the fitment of tire and wheel sizes listed. The Tire and Wheel sizes listed in Fabtech's catalog are only a guideline for street driving with noted fender trimming. Fabtech is not responsible for damages to the vehicle's body or tires.

Fabtech's obligation under this warranty is limited to the repair or replacement, at Fabtech option, of the defective product only. All costs of removal, installation or re-installation, freight charges, incidental or consequential damages are expressly excluded from this warranty. Fabtech is not responsible for damages and/or warranty of other vehicle parts related or non related to the installed Fabtech product. This warranty is expressly in lieu of all other warranties expressed or implied. This warranty shall not apply to any product that has been subject to accident, negligence, alteration, abuse or misuse as determined by Fabtech.

Fabtech suspension components must be installed as a complete system including shocks as shown in our current catalog. All warranties will become void if Fabtech parts are combined and/or substituted with other aftermarket suspension products. Combination and/or substitution of other aftermarket suspension parts may cause premature wear and/or product failure resulting in an accident causing injury or death. Fabtech does not warrant products not manufactured by Fabtech.

Installation of Fabtech product may void the vehicles factory warranty; it is the consumer's responsibility to check with their local vehicle's dealer for warranty disposition before the installation of the product.

It is the responsibility of the distributor and/or the retailer to review all warranties and warnings of Fabtech products with the consumer prior to purchase.

Fabtech reserves the right to supercede, discontinue, change the design, finish, part number and, or application of parts when deemed necessary without written notice. Fabtech is not responsible for misprints or typographical errors within the catalog or price sheet.